

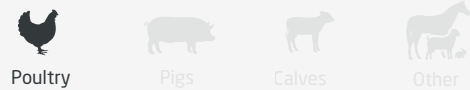
RP-SK

Blackout Side Window RP-SK

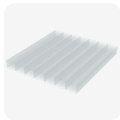


- ✓ Meets the requirements of KAT/QS/SKAL/MDV/BLK
- ✓ Stepless blackout from 0-100%
- ✓ Uniform light distribution
- ✓ High insulation value
- ✓ Completely assembled
- ✓ Spring closed

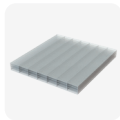
Suitable sectors



Options



Clear polycarbonate



Opal polycarbonate



Telescopic outer flange



Fixed outer flange



PU filled flaps



Combi panel with wall inlets



Window panel without blackout system

Type	Installation dimensions (mm)			Net surface	Pull force	Stroke length
	W	H	D			
RP-SK 2006-500	2006 mm	500 mm	200 mm	8.800 cm ²	7.5 kg	300 mm
RP-SK 2251-500	2251 mm	500 mm	200 mm	9.900 cm ²	7.5 kg	300 mm
RP-SK 2496-500	2496 mm	500 mm	200 mm	11.000 cm ²	7.5 kg	300 mm
RP-SK 2006-800	2006 mm	800 mm	200 mm	14.700 cm ²	9 kg	300 mm
RP-SK 2251-800	2251 mm	800 mm	200 mm	16.500 cm ²	9 kg	300 mm
RP-SK 2496-800	2496 mm	800 mm	200 mm	18.300 cm ²	9 kg	300 mm

Available dimensions

Width	658-2618 mm	In steps of 122.5 mm
Height	400-1120 mm	In steps of 1 mm
Depth	200-500 mm	In steps of 25 mm

